

GURUKUL INTERNATIONAL SCHOOL, HALDWANI

HOME WORK FOR WINTER BREAK (2025-26)

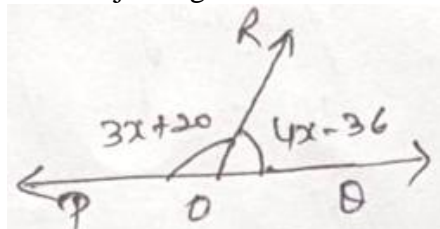
Class- IX

ENGLISH –

- 1 Compose a lively conversation between a tree and a bulldozer when a forest is being cleared for a new park. Who wins the argument, and why ? (100–150 words)
- 2 If the climax of “The Snake and the Mirror” (Chapter 9, Beehive) had turned out differently, rewrite the ending in 150–200 words — the doctor outsmarts the snake!
- 3 Design a diary entry for a day in the life of a teenager living in a smart city, focusing on technology’s impact on daily routines.
- 4 Create a striking poster (A4 size, digital or handmade) with a compelling image and a 50 words caption.
Topic -“Voices Unheard”
 - * Highlight an issue ignored by many (e.g., mental health, street animals, cyberbullying). Use powerful, wordless imagery.
 - * Caption Example: “Listen before the whisper fades.”
- 5 Write a speech on "Mental Health in the Digital Age: Are We Losing Ourselves Online ?"
Blend cyberbullying, peer pressure and the importance of seeking help.

MATHEMATICS –

- 1 In a certain code ‘la ke ta’ means ‘go and swim’. ‘ne la se’ means ‘you swim here’ and ‘pe ke ne ta’ means ‘he and you go’. Which of the following is the code for ‘here’ in that language?
a) Who b) Are c) Who or Are d) Data inadequate e) none of these
- 2 If AMONG is written as NAOGM and SPINE is written as NSIEP, then LAMON will be written as
a) OALNM b) MLONA c) OLMNA d) OLNMA e) None of these
- 3 In the adjoining the value of x is



- 4 A, B and C enter into a partnership. Their capital contribution is in the ratio 7 : 9 : 14, respectively. At the end of the business term, they share profits in the ratio 5 : 4 : 9. Find the ratio of time for which they invest their capitals.
- 5 A, B and C enter into a partnership business which capital investment of Rs 6000 and Rs 4000. A gets 30% of the profit for this contribution in managing the business. At the end of the year, A gets Rs 200 more than B and C put together. Find the total profit.
- 6 A man mixes with spirit. The of 1 L wine and sprit are Rs 180 and Rs 100, respectively. How much quantity of spirit should he mix with 50 L of wine, if so that there is neither profit nor loss, if mixture is being sold at Rs 50 per litre ?
- 7 Teachers and students of class IX of a school had gone to Nandankannan for study tour. After visiting different places of Nandankannan, lastly , they visited bird’s sanctuary and deer park. Rohan is clever boy and keen observer. He put the question to his friends how many birds are there and how many deer are there (at particular time) in Nandankannan ? Rahul friend, Nishith gave the correct answer as follows;
Nishith answered that total animal have 1000 eyes and 1400 legs.
 - i) If x and y be the number of birds and deer respective what is the equation of total number of eyes ?
a) $x+y=1000$ b) $x+y=500$ c) $x-y=1000$ d) $x - y =500$
 - ii) What is the equation of total number of legs ?
a) $2x + y =70$ b) $x +2y = 500$ c) $x + 2y =700$ d) $2x - y = 500$
 - iii) How many birds are there in the Zoo ?
 - iv) Show many deer are there in Zoo ?

SCIENCE–

- 1 Define
 - i) Valency
 - ii) Isotopes
 - iii) Isobars
 - iv) electronic configuration
- 2 As a chemistry student, carefully read the ingredient label of any one household item you use daily (for example: toothpaste or fruit jam, hair oil, shampoo, biscuits). Cut, paste or draw the ingredients list in your notebook.
*Write the names of any three chemical compounds and their formula mentioned on the labels.
- 3 Why is mitochondria called 'power-house of cell's? Give similarities and one difference between mitochondria and plastids.
- 4 Rahul and Rachna were practicing floriculture in their farm. They sold the flowers to florists in India. They felt that if they start bee-keeping too, their income will increase. They obtained more information from the local officer.
 - a) What is pasturage and how is it related to quality of honey?
 - b) Name a bee variety which is commonly used for commercial honey production.
- 5 A boy pushes a box with a force of 30 N over a distance of 5 m in the direction of the force. If the force of friction between the box and the floor is 10 N, calculate
 - a) The work done by the boy.
 - b) The work done against friction.
 - c) The net work done on the box.
- 6 Using any household items (pulses, beads, coins, paper balls, clay, etc.), make a model of an atom of any element from atomic number 1 to 10 on a cardboard and represent its electronic configuration.
- 7 **Case Study: Understanding Gravitation in Everyday Life**

Case Situation

Riya and Aman are visiting a hill station during their school trip. They notice a waterfall flowing continuously downward from a height. Aman wonders why the water always falls toward the ground and never moves upward on its own.

Later, while returning home, they watch a roller coaster at an amusement park. Riya observes that the coaster moves faster while coming down and slower while going up.

That night, Riya watches a science documentary showing how satellites revolve around the Earth in fixed paths. She notices that although gravity is acting on the satellite, it continues to move around the Earth instead of falling straight down. This makes her curious about how gravitational force works differently in different situations.

- a) Name the force that attracts objects toward the Earth.
- b) On which two factors does gravitational force depend?
- c) How does an increase in mass affect gravitational force?

SOCIAL SCIENCE–


- 1 Define the terms
 - a) Euphemism
 - b) Proletarianisation
 - c) PDS
 - d) Referendum
- 2 With the help of diagram, explain the different physical features of India.
- 3 Complete the chart below-

Terms of Treaty	Impact on Germany
i) War Guilt Clause
ii) Reparations
iii) Territorial losses
iv) Military Restrictions
- 4 Take a molding clay and form Drainage system model (River system) of India.
- 5 **Case study –**

After the First World War, Germany faced severe economic problems. The Treaty of Versailles imposed heavy war compensation on Germany. Unemployment increased, and people lost faith in the democratic government. Adolf Hitler promised economic recovery, national pride, and employment. His powerful speeches and propaganda attracted many Germans, leading to the rise of Nazism.

 - a) Name the treaty that weakened Germany after World War I.
 - b) Mention any two problems faced by Germany during this period.
 - c) How did Hitler gain the support of the people?
 - d) What role did propaganda play in the rise of Nazism?

HINDI –

- 1 **समूह चर्चा रिपोर्ट– परिवार से बातचीत**
अपने परिवार के सदस्यों से हिंदी में बातचीत करें और 'परिवर्तनशील भारत' विषय पर उनकी ३-४ राय नोट करें। फिर, २०० शब्दों में एक रिपोर्ट लिखें जिसमें आपकी अपनी राय भी जोड़ें। यदि संभव हो, तो ऑडियो रिकॉर्डिंग बनाएँ।
उद्देश्य– मौखिक संवाद कौशल और सामाजिक चेतना।
- 2 **रचनात्मक लेखन– कविता रचना**
'मेरा प्रिय त्योहार' या 'प्रकृति की सुंदरता' विषय पर एक कविता लिखें। कविता में कम से कम १६ पंक्तियाँ हों, जिसमें छंद (जैसे दोहा या चौपाई) का उपयोग करें। अपनी भावनाओं को जीवंत शब्दों से व्यक्त करें।
उद्देश्य– काव्य रचना और अभिव्यक्ति शक्ति बढ़ाना।
- 3 **परियोजना कार्य (Project Work)**
विषय– "पुस्तकों का महत्व" विषय पर निम्न बिंदुओं के आधार पर एक परियोजना तैयार कीजिए।
भूमिका
पुस्तकों से मिलने वाले लाभ
विद्यार्थियों के जीवन में पुस्तकों का स्थान
निष्कर्ष
चित्र/स्लोगन
(5-6 पृष्ठ, साफ-सुथरी लिखावट में)
- 4 **स्व-मूल्यांकन** 
छुट्टियों में आपने कौन-सी नई पुस्तक पढ़ी ?
हिंदी में क्या नया सीखा ?
आपको कौन-सा कार्य सबसे अच्छा लगा ?
(संक्षेप में लिखें)
- 5 पर्वतीय स्थलों पर घूमने हेतु मामाजी के आमंत्रण पर ना पहुंच पाने के लिए खेद प्रकट करते हुए एक पत्र लिखिए।

COMPUTER –

- 1 Arav is preparing a presentation on Climate Change using LibreOffice Impress. He adds text, images, slide transitions, and animations. To make his presentation effective, he keeps the slides simple and uses bullet points instead of long paragraphs.
 - a) Name the presentation software used by Aarav.
 - b) List any two multimedia elements used in the presentation.
 - c) Why should slides be kept simple and concise ?
 - d) Which feature of Impress is used to move from one slide to another smoothly ?
- 2 Solar Panels Installed on a School Rooftop
 - a) Which green skill is being promoted through this system ?
 - b) Mention two advantages of using this energy source.
 - c) How does this system help in reducing carbon footprint ?
 - d) Name one career option related to this green technology.
- 3 **Value-Based Questions**
Digital Responsibility
A student is preparing a presentation on Green Skills using LibreOffice Impress. She copies images and text from the internet without mentioning the source.
 - a) Which value is missing in the student's action?
 - b) Why is it important to give credit to sources while creating presentations?
 - c) What should the student do to correct her mistake?
 - d) Prepare a chart showing renewable and non-renewable resources and analyze their usage.